

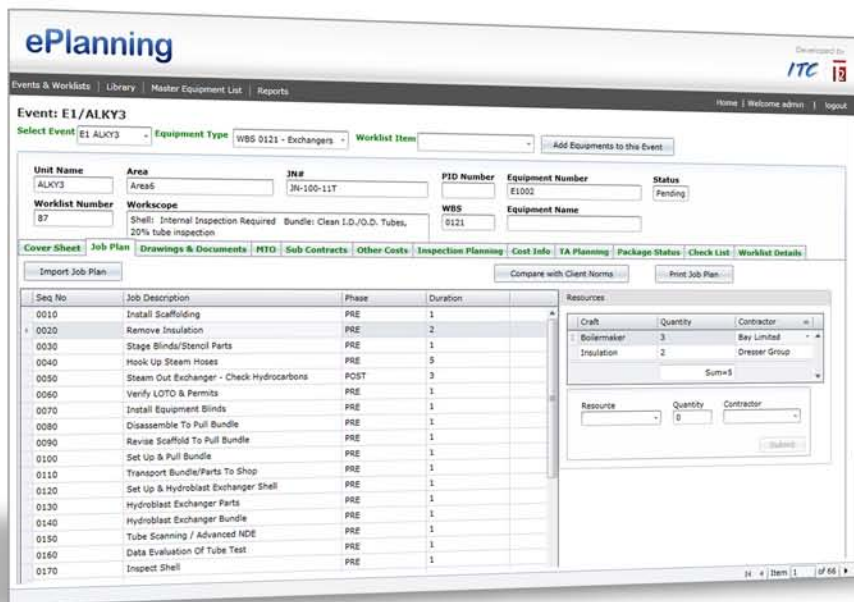
eP ePlanning

Formerly known as:



Toadfly presents the latest tool in turnaround planning: **ePlanning**. Combining a depth of industry knowledge and advances in the latest software technologies, Toadfly delivers a product that is adaptable to handle the most complicated tasks, while at the same time staying very user-friendly.

ePlanning is the one-stop planning tool that can take a turnaround from conception through execution all the way to completion, while saving both time and money for the end user.



The screenshot displays the ePlanning software interface. At the top, it shows the 'ePlanning' logo and navigation tabs for 'Events & Worklists', 'Library', 'Master Equipment List', and 'Reports'. The main area is titled 'Event: E1/ALKY3' and contains various input fields for 'Unit Name', 'Area', 'JN#', 'PID Number', 'Equipment Number', 'Status', 'Worklist Number', and 'Workscope'. Below these fields are several tabs: 'Cover Sheet', 'Job Plan', 'Drawings & Documents', 'MTO', 'Sub-Contracts', 'Other Costs', 'Inspection Planning', 'Cost Info', 'TA Planning', 'Package Status', 'Check List', and 'Worklist Details'. The 'Job Plan' tab is active, showing a table with columns for 'Seq No', 'Job Description', 'Phase', and 'Duration'. A 'Resources' window is open on the right, displaying a table with columns for 'Craft', 'Quantity', and 'Contractor'. The table lists 'Boilermaker' with a quantity of 3 and 'Insulation' with a quantity of 2. The interface also includes a 'Print Job Plan' button and a status bar at the bottom.

Seq No	Job Description	Phase	Duration
0010	Install Scaffolding	PRE	1
0020	Remove Insulation	PRE	2
0030	Stage Blinds/Stencil Parts	PRE	1
0040	Hook Up Steam Hoses	PRE	5
0050	Steam Out Exchanger - Check Hydrocarbons	POST	3
0060	Verify LOTO & Permits	PRE	1
0070	Install Equipment Blinds	PRE	1
0080	Disassemble To Pull Bundle	PRE	1
0090	Revise Scaffold To Pull Bundle	PRE	1
0100	Set Up & Pull Bundle	PRE	1
0110	Transport Bundle/Parts To Shop	PRE	1
0120	Set Up & Hydroblast Exchanger Shell	PRE	1
0130	Hydroblast Exchanger Parts	PRE	1
0140	Hydroblast Exchanger Bundle	PRE	1
0150	Tube Scanning / Advanced NDE	PRE	1
0160	Data Evaluation Of Tube Test	PRE	1
0170	Inspect Shell	PRE	1

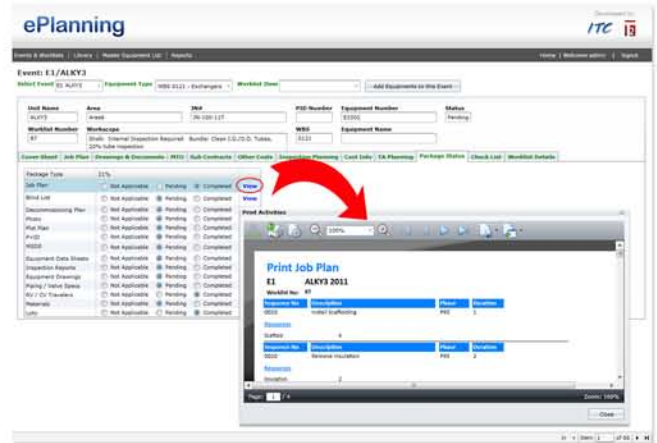
Highlights

- ✓ User-friendly interface
- ✓ Ease of planning and execution
- ✓ Syncs with Primavera
- ✓ Customized reports
- ✓ Handheld version

ePlanning Capabilities

Planning

- Detailed Activity Templates
- Resource loading, labor and equipment
- Work scope development reports
- Documentation tracking
- History of work completed
- Database customized to client



Package status page with completed documents

Cost

- AFE Development
- Estimate Reports
- Cost breakdowns by AFE, Unit, Contractor, equipment, and resources

Material

- Material entry by work list items
- SAP mass requisition export
- Warehouse reports
- BOM reports by equipment

Primavera

- Exports to Excel file for uploading into P6
- Detailed activities, resource loaded, and linked after import

Accountability

- Justification of work scope
- Personnel and dates of work scope changes
- History of who originated or changed scope

LEVEL 1 ESTIMATES						
ALKY3 2011						
Labor Inv.	Equip Inv.	Matl S.	Supp S.	Other	Total	
88	\$1,625.00	188	\$18,820.00	\$0.00	\$0.00	\$20,445.00
76	\$7,500.00	75	\$8,100.00	\$251.00	\$1,254.00	\$17,105.00
88	\$8,625.00	188	\$18,820.00	\$0.00	\$0.00	\$28,273.00
WBS 0211 - Exchangers	883	\$16,975.00	358	\$18,820.00	\$1,254.00	\$37,847.00
88	\$8,625.00	188	\$18,820.00	\$0.00	\$0.00	\$28,273.00
WBS 0211 - Control Valves	88	\$8,625.00	188	\$18,820.00	\$0.00	\$28,273.00
ALKY3	469	\$46,000.00	718	\$48,100.00	\$1,254.00	\$95,454.00
ALKY3 2011	469	\$46,000.00	718	\$48,100.00	\$1,254.00	\$95,454.00
ULC 2011						
Labor Inv.	Equip Inv.	Matl S.	Supp S.	Other	Total	
205	\$21,500.00	205	\$15,700.00	\$1,762.00	\$44.00	\$38,206.00
88	\$8,625.00	188	\$18,820.00	\$0.00	\$0.00	\$28,273.00
WBS 0211 - Exchangers	883	\$16,975.00	358	\$18,820.00	\$1,254.00	\$37,847.00
ULC	883	\$16,975.00	358	\$18,820.00	\$1,254.00	\$37,847.00
ULC 2011	883	\$16,975.00	358	\$18,820.00	\$1,254.00	\$37,847.00

Level 1 Estimate by Equipment Type

